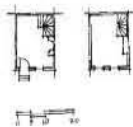


Colonial & Early 19th Century Rowhouses

SMALL



Known as: Trinity, Bandbox, Father, Son & Holy Ghost

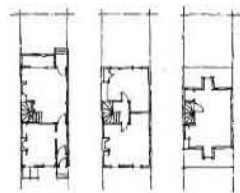
Size: 400-600 sq. ft.

Location: Society Hill, Queen Village, Old City, Kensington

Defining Characteristics:

One entry, winder stair, no running water, community “necessaries”, often mid-block with no street frontage

MEDIUM



Known as: Double Trinity, London House

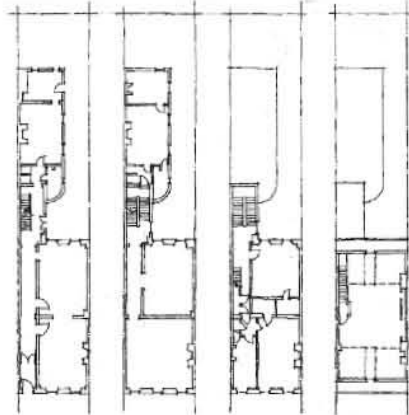
Size: 1,000-1,800 sq. ft.

Location: Society Hill, Queen Village, Old City, Kensington, Washington Square

Defining Characteristics:

Three stories plus basement, gable roof (ridge is parallel to front of house), two fireplaces, rear yard with access

LARGE



Known as: Federal or Georgian Town House

Size: 3,000-7,000 sq. ft.

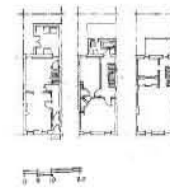
Location: Society Hill, Queen Village, Old City, Kensington

Defining Characteristics:

Three to four stories, with narrower but deep extension to reach the back of the main house; first floor two rooms deep, then offset to allow more light into main volume

Mid to Late 19th Century Rowhouses

SMALL



Known as: Workingman’s house

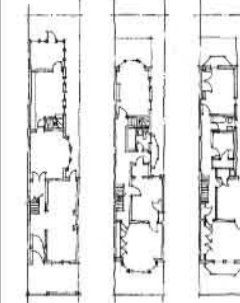
Size: 1,000-1,600 sq. ft. on two floors

Location: Center City, South Philadelphia, North Philadelphia, West Philadelphia, Manayunk

Defining Characteristics:

Entry vestibule, shed kitchen, shallow closets, indoor plumbing, central heating

MEDIUM



Known as: Streetcar town house

Size: 2,200-2,500 sq. ft. on 3 floors

Location: North Philadelphia, South Philadelphia, West Philadelphia

Defining Characteristics:

Front porches, bay windows, tall ceilings, elaborate woodwork

LARGE



Known as: Urban mansion, townhouse

Size: 3,000-6,000 sq. ft. on 3-4 floors

Location: Rittenhouse Square, North Broad Street, South Broad Street

Defining Characteristics:

Three to four stories, 18-22 feet wide, carriage houses, two stairs, multiple formal rooms, rooms for live-in help, skylights over stairwells, lightwells, ornate fireplaces and paneling